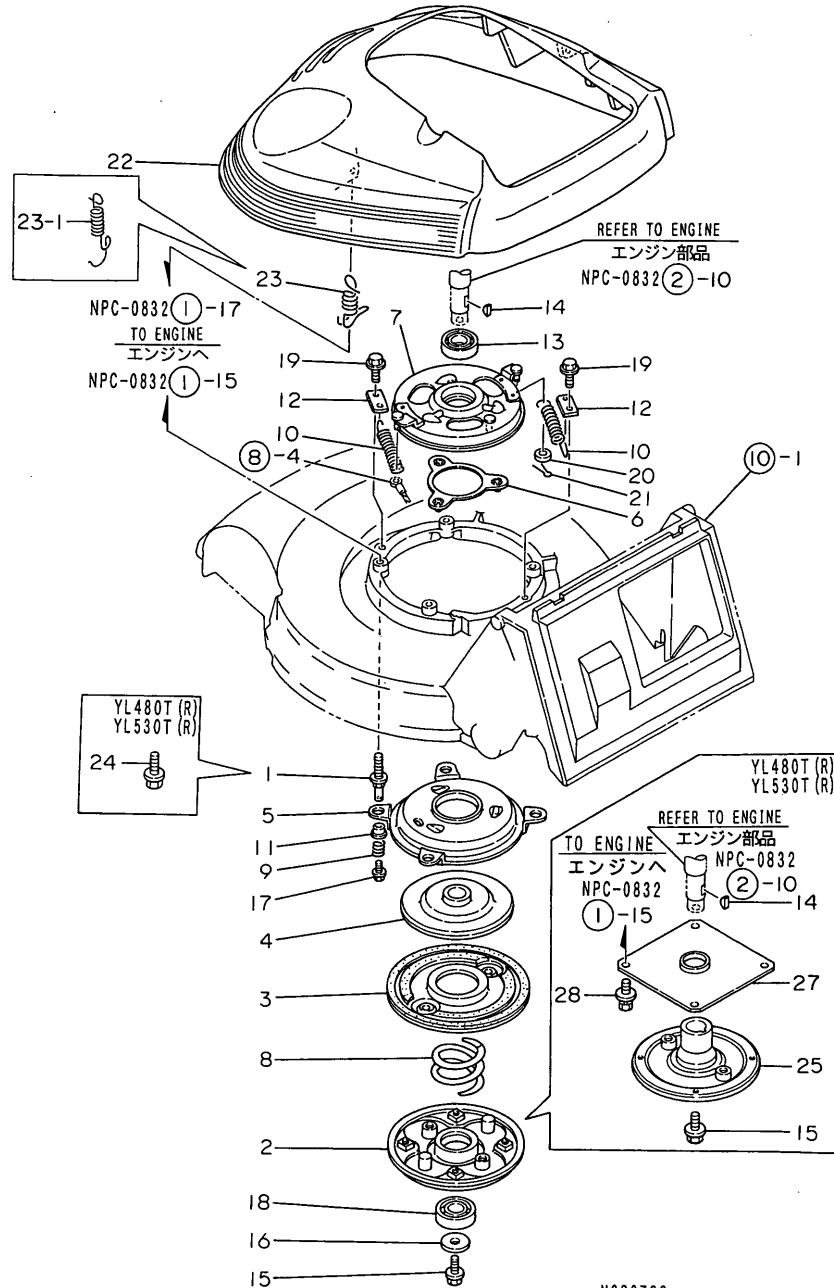


Fig.1. CLUTCH & ENGINE COVER

1. CLUTCH & ENGINE COVER



N060733

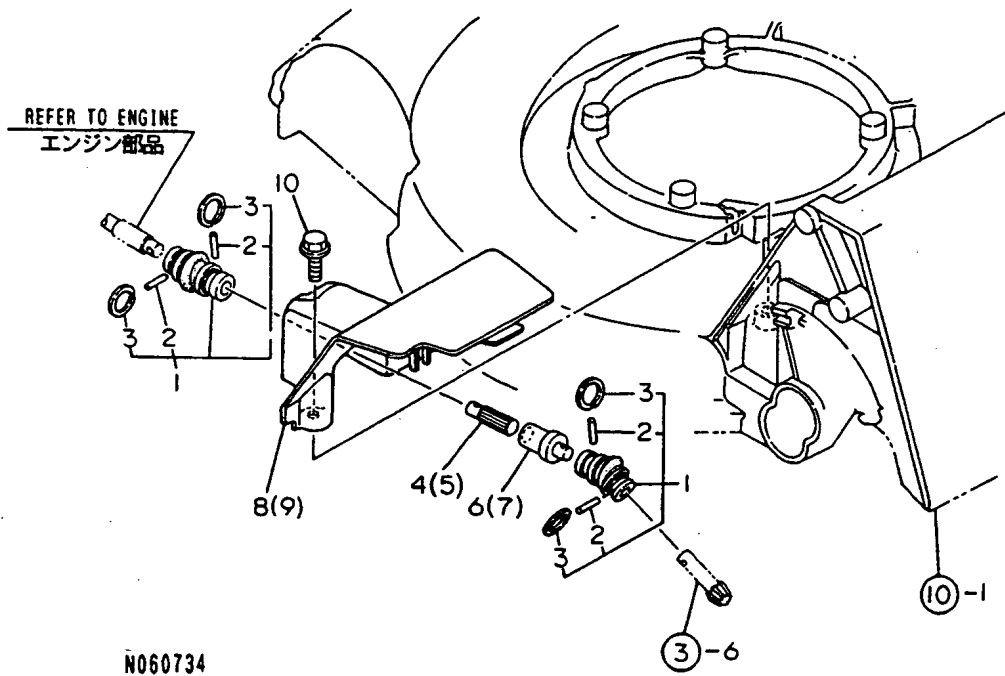
OCNP2-G14500 1. CLUTCH & ENGINE COVER

(A)=YL480T(R,-V) (D)=YL530T(R,-V)
 (B)=YL480TS(-N) (E)=YL530TS
 (C)=YL480TSE(-N) (F)=YL530TSE

REF.	LEV.	PARTS NO.	DESCRIPTION	QTY						I	R
				(A)	(B)	(C)	(D)	(E)	(F)		
1	1	1E1061-11100	BOLT,ENGINE SET	4	4		4	4			
2	1	1E1060-12011	PLATE,MAIN	1	1		1	1			
3	1	1E1060-12100	DISK	1	1		1	1			
4	1	1E1061-12150	DRUM,DRIVE	1	1		1	1			
5	1	1E1061-12170	PLATE,DISC	1	1		1	1			
6	1	1E1061-12220	BRACKET,BOWL	1	1		1	1			
7	1	1E1061-12250	BRACKET,DISK BOWL	1	1		1	1			
7-1	1	1E1061-12251 (B=FXXXXXX) (C=FXXXXXX)	BRACKET,DISK BOWL (B=FXXXXXX) (C=FXXXXXX)	1	1		1	1	1	N	
8	1	1E1060-12300	SPRING,CLUTCH	1	1		1	1			
8-1	1	1E1071-12300 (B=FXXXXXX) (C=FXXXXXX)	SPRING,CLUTCH (B=FXXXXXX) (C=FXXXXXX)	1	1		1	1	1	N	
9	1	1E1061-12310	SPRING, GUIDE	4	4		4	4			
10	1	1E1060-12320	SPRING,CLUTCH RETURN	2	2		2	2			
10-1	1	1E1071-12320 (B=FXXXXXX) (C=FXXXXXX)	SPRING,CLUTCH RETURN (B=FXXXXXX) (C=FXXXXXX)	2	2		2	2	2	N	
11	1	1E1060-12340	METAL 106,FLANGED	4	4		4	4			
12	1	1E1061-12360	HOOK,RETURN SPRING	2	2		2	2			
13	1	1E1060-12970	BEARING 60/22UU	1	1		1	1			
14	1	22522-040160	KEY 4X16	1	1	1	1	1	1		
15	1	1E1060-12990	BOLT 10X28,COLLAR HD	1	1	1	1	1	1		
16	1	1A1040-46460	WASHER 10X33X4.5	1	1		1	1			
17	1	1E4480-99150	BOLT 6X12	4	4		4	4			
18	1	24104-062044	BALL BEARING	1	1		1	1			
19	1	26476-080162	BOLT M 8X 16,TAPPING	2	2		2	2			
20	1	22137-060000	WASHER 6, POLISHED	1	1		1	1			
21	1	22417-200120	COTTER PIN 2.0X12	1	1		1	1			
22	1	1E1061-13010	BONNET	1	1	1	1	1	1		
22-1	1	1E1061-13011 (A=F010552) (B=F010645) (C=F010257) (D=F010785) (E=F011213) (F=F010554)	BONNET	1	1	1	1	1	1	N	
23	1	1E1061-13110	SPRING,BONNET MTG.	2	2	2	2	2	2		
23-1	1	1E1061-13111 (A=F010552) (B=F010645) (C=F010257) (D=F010785) (E=F011213) (F=F010554)	SPRING,BONNET MTG.	2	2	2	2	2	2	N	
24	1	26107-100352	BOLT 10X35,COLLAR HD	4			4				
25	1	1E1061-12650	FRANGE,BLADE	1			1				
26	1	1E1061-13200 (A=F010552) (B=F010645) (C=F010257) (D=F010785) (E=F011213) (F=F010554)	TAPE 20X40,SOFT	1	1	1	1	1	1	W	
27	1	1E1071-12750 (A=FXXXXXX) (D=FXXXXXX)	COVER,ENGINE LOWER	1			1			W	
28	1	26018-080164 (A=FXXXXXX) (D=FXXXXXX)	BOLT M 8X 16	4			4			W	

Fig.2. INPUT

2. INPUT



0CNP2-G14500 2. INPUT

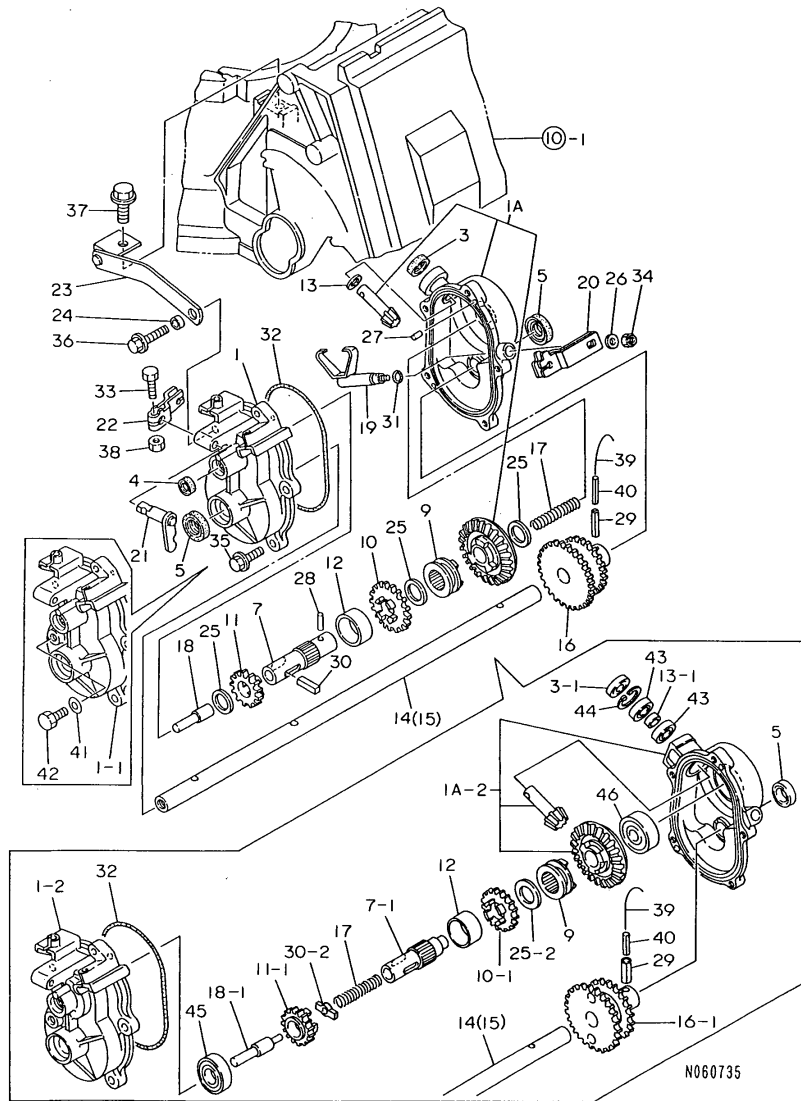
(A)=YL480T(R,-V)
(B)=YL480TS(-N)
(C)=YL480TSE(-N)

(D)=YL530T(R,-V)
(E)=YL530TS
(F)=YL530TSE

REF.	LEV.	PARTS NO.	DESCRIPTION	Q'TY						I	R
				(A)	(B)	(C)	(D)	(E)	(F)		
1	1	1E1061-21010	JOINT COMP.,TYPE 10	2	2	2	2	2	2		
2	2	1E1061-21030	PIN, FLEXIBLE JOINT	4	4	4	4	4	4		
3	2	22242-000200	CIRCLIP 20	4	4	4	4	4	4		
4	1	1E1061-21100	SHAFT A 48,SLIDE	1	1	1					
5	1	1E1071-21100	SHAFT A 53,SLIDE				1	1	1		
6	1	1E1061-21120	SHAFT B 48,SLIDE	1	1	1					
7	1	1E1071-21120	SHAFT B 53,SLIDE				1	1	1		
8	1	1E1061-21200	COVER 48,P.T.O.	1	1	1					
9	1	1E1071-21200	COVER 53,P.T.O.				1	1	1		
10	1	26476-080162	BOLT M 8X 16,TAPPING	1	1	1	1	1	1		

Fig.3. GEAR CASE

3. GEAR CASE



Remarks
 (1) REF. NO.30 PART IS PLATED
 REF. NO.30-1 PART IS NOT PLATED
 (2) REF. NO.1-2 PART HAS REF.NO.45
 BEARING MOUNTING HOLE
 (3) TOOTH NUMBER=REF.NO.10,31
 TOOTH;REF.NO.10-1,27 TOOTH

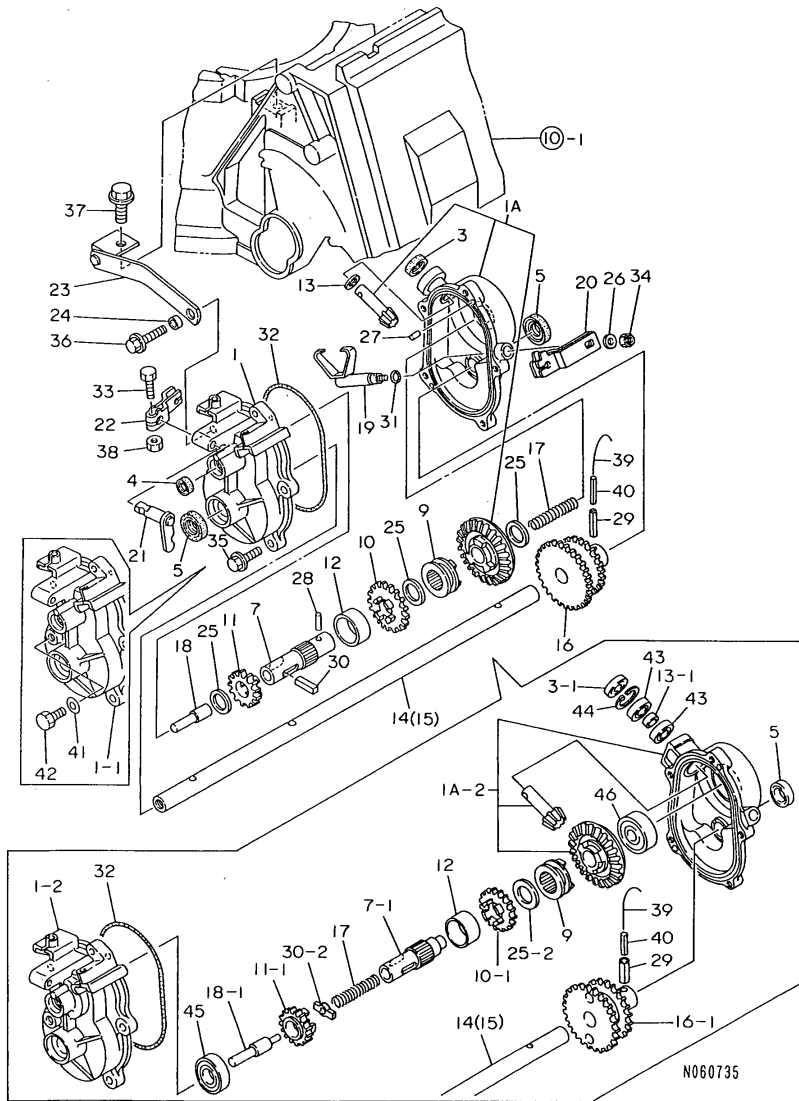
OCNP2-G14500 3. GEAR CASE

(A)=YL480T(R,-V) (D)=YL530T(R,-V)
 (B)=YL480TS(-N) (E)=YL530TS
 (C)=YL480TSE(-N) (F)=YL530TSE

REF.	LEV.	PARTS NO.	DESCRIPTION	QTY						I	R
				(A)	(B)	(C)	(D)	(E)	(F)		
1	1	1E1061-25010	CASE, GEAR	1	1	1	1	1	1		
1-1	1	1E1061-25011	CASE, GEAR	1	1	1	1	1	1		N
		(A=F013872) (B=F013665) (C=F010739) (D=F013555) (E=F014823) (F=F011129)									
I	1-2	1E1061-25012	CASE, GEAR		1			1			S 2
		(B=F015274)						(E=F017010)			
1A	1	1E1061-25500	BEVEL CASE CMP.	1	1	1	1	1	1		
1A-1	1	1E1061-25501	BEVEL CASE CMP.	1	1	1	1	1	1		N
		(A=F100302) (B=F010628) (C=F010934) (D=F100302) (E=F016133) (F=F011502)									
I	1A-2	1E1061-25502	CASE,BEVEL GEAR,ASY		1			1			S
		(B=F015274)						(E=F017010)			
3	1	1E1061-25050	SEAL TC10205,OIL	1	1	1	1	1	1		
I	3-1	1E1061-25051	OIL SEAL TC10225		1			1			S
		(B=F015274)						(E=F017010)			
4	1	1E1061-25060	SEAL TC8165,OIL	1	1	1	1	1	1		
5	1	1E1061-25070	SEAL TC15255,OIL	2	2	2	2	2	2		
7	1	1E1061-25110	SHAFT,CLUTCH	1	1	1	1	1	1		
I	7-1	1E1061-25111	SHAFT,CLUTCH		1			1			S
		(B=F015274)						(E=F017010)			
9	1	1E1060-25140	CLUTCH,AXLE	1	1	1	1	1	1		
10	1	1E1061-25140	GEAR 31	1	1	1	1	1	1		
I	10-1	1E1061-25141	GEAR 27		1			1			S 3
		(B=F015274)						(E=F017010)			
I	10-2	1E1061-25142	GEAR 27					1			N
		(E=F017530)									
11	1	1E1061-25150	GEAR 21	1	1	1	1	1	1		
I	11-1	1E1061-25151	GEAR 21		1			1			S
		(B=F015274)						(E=F017010)			
12	1	1E1061-25160	COLLAR 26X32X14	1	1	1	1	1	1		
13	1	1E1061-25170	LINER 10X16X1	1	1	1	1	1	1		
I	13-1	1E1061-25171	SPACER 10X13.8X6		1			1			S
		(B=F015274)						(E=F017010)			
14	1	1E1061-25200	SHAFT 48,DRIVE	1	1	1					
15	1	1E1071-25200	SHAFT 53,DRIVE				1	1	1		
16	1	1E1061-25210	GEAR 45-36 COMPL.	1	1	1	1	1	1		
I	16-1	1E1061-25211	GEAR 45-39		1			1			S
		(B=F015274)						(E=F017010)			
I	16-2	1E1061-25212	GEAR 45-39					1			N
		(E=F017530)									
17	1	1E1061-25250	SPRING 10.7X53	1	1	1	1	1	1		
18	1	1E1061-25270	PIN,CHANGE	1	1	1	1	1	1		
I	18-1	1E1061-25271	PIN,CHANGE		1			1			S
		(B=F015274)						(E=F017010)			
19	1	1E1061-25300	CLUTCH FORK	1	1	1	1	1	1		
20	1	1E1061-25330	LEVER 45H,TIP	1	1	1	1	1	1		
21	1	1E1061-25370	LINK,CHANGE	1	1	1	1	1	1		
22	1	1E1061-25410	LEVER 30,TIP	1	1	1	1	1	1		
23	1	1E1061-25430	LINK,CASE SUPPORT	1	1	1	1	1	1		
24	1	1E6910-39640	COLLAR 6.5X10.5X5	1	1	1	1	1	1		
25	1	1E4060-74090	LINER 17X24X1	3	3	3	3	3	3		
25-1	1	1E1061-25180	LINER 17301	3	3	3	3	3	3		N
		(A=FXXXXXX) (B=FXXXXXX) (C=FXXXXXX) (D=FXXXXXX) (E=FXXXXXX) (F=FXXXXXX)									

Fig.3. GEAR CASE

3. GEAR CASE



Remarks
 (1) REF. NO.30 PART IS PLATED
 REF. NO.30-1 PART IS NOT PLATED
 (2) REF. NO.1-2 PART HAS REF.NO.45
 BEARING MOUNTING HOLE
 (3) TOOTH NUMBER=REF.NO.10,31
 TOOTH;REF.NO.10-1,27 TOOTH

OCNP2-G14500 3. GEAR CASE

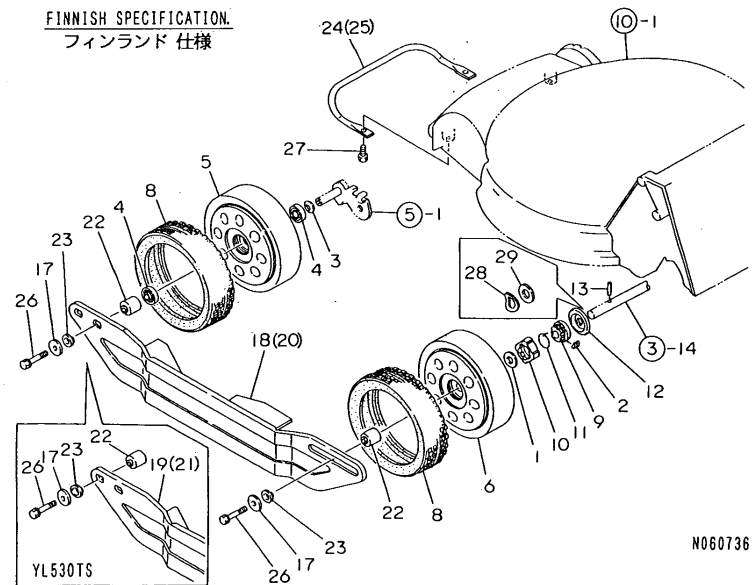
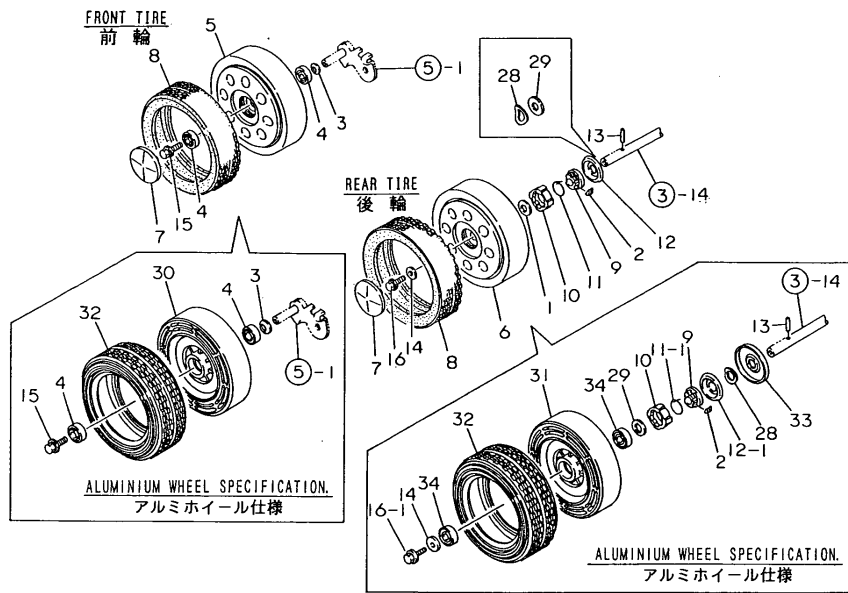
(A)=YL480T(R,-V)
 (B)=YL480TS(-N)
 (C)=YL480TSE(-N)

(D)=YL530T(R,-V)
 (E)=YL530TS
 (F)=YL530TSE

REF.	LEV.	PARTS NO.	DESCRIPTION	QTY						I	R
				(A)	(B)	(C)	(D)	(E)	(F)		
I	25-2	1	1E1061-25180 LINER 17301 (B=F015274)	1				1			K
	26	1	22137-060000 WASHER 6, POLISHED	1	1	1	1	1	1		
	27	1	22312-040080 PIN 4X8, STRAIGHT	2	2	2	2	2	2		
I	28	1	22312-040140 PARALLEL PIN 4X14 (B=F015274)	1				1			Z
	29	1	22351-060025 SPRING PIN 6X25	1	1	1	1	1	1	1	
	30	1	22551-050250 KEY 5X25		1	1		1	1		
	30-1	1	1E1061-25490 KEY 5X5X25 (B=F010528) (C=F010266)	1	1	1	1	1	1	1	S 1
I	30-2	1	1E1061-25491 TINE CLUTCH (B=F015274)	1				1		1	S
	31	1	24311-000070 O-RING 1A P-7.0	1	1	1	1	1	1	1	
	32	1	24321-001100 O-RING 1A G-110.0	1	1	1	1	1	1	1	
	33	1	26117-060202 BOLT M 6X 20	1	1	1	1	1	1	1	
	34	1	26347-060002 U-NUT M 6	1	1	1	1	1	1	1	
	35	1	26476-060202 BOLT M 6X 20, TAPPING	4	4	4	4	4	4	4	
	36	1	26476-060302 BOLT M 6X 30, TAPPING	1	1	1	1	1	1	1	
	37	1	26476-080162 BOLT M 8X 16, TAPPING	1	1	1	1	1	1	1	
	38	1	26717-060002 NUT M 6	1	1	1	1	1	1	1	
	39	1	22451-100160 WIRE 1.0X160, BINDING	1	1	1	1	1	1	1	W
	40	1	22351-035025 SPRING PIN 3.5X25 (A=F013047) (B=F013225) (C=F010689) (D=F012905) (E=F013873) (F=F011079)	1	1	1	1	1	1	1	W
	41	1	23414-080000 GASKET 8, ROUND (A=F013872) (B=F013665) (C=F010739) (D=F013555) (E=F014823) (F=F011129)	1	1	1	1	1	1	1	W
	41-1	1	22190-080000 SEAL WASHER 8(BOLT) (A=F014222) (B=F013878) (C=F010739) (D=F013805) (E=F014973) (F=F011129)	1	1	1	1	1	1	1	N
	42	1	26117-080122 BOLT M 8X 12 PLATED (A=F013872) (B=F013665) (C=F010739) (D=F013555) (E=F014823) (F=F011129)	1	1	1	1	1	1	1	W
I	43	1	1E1061-25481 BEARING 6900 (B=F015274)	2				2			W
I	44	1	22252-000220 CIRCLIP 22 (B=F015274)	1					1		W
I	45	1	24101-060034 BALL BEARING (B=F015274)	1					1		W
I	46	1	24101-063014 BALL BEARING (B=F015274)	1					1		W

Fig.4. WHEEL

4. WHEEL



Remarks
 (1)EXCLUSIVE FOR FINNISH.
 (2)EXCLUSIVE FOR TYPE ALUMINIUM WHEEL

OCNP2-G14500 4. WHEEL

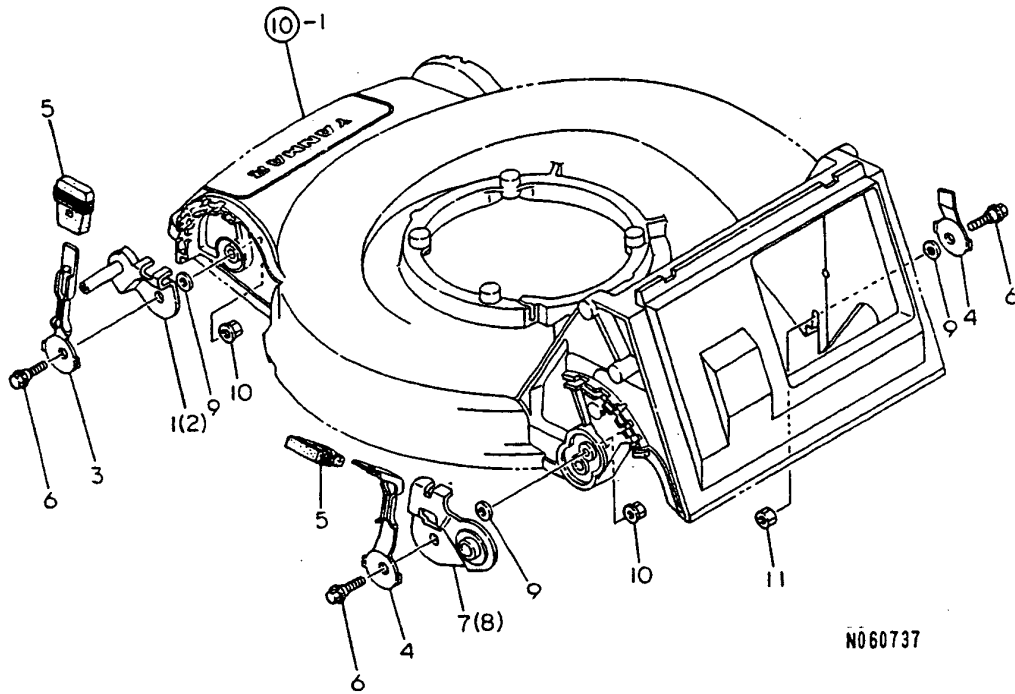
(A)=YL480T(R,-V)
 (B)=YL480TS(-N)
 (C)=YL480TSE(-N)

(D)=YL530T(R,-V)
 (E)=YL530TS
 (F)=YL530TSE

REF.	LEV.	PARTS NO.	DESCRIPTION	QTY						I	R
				(A)	(B)	(C)	(D)	(E)	(F)		
1	1	1E6210-11050 (A=F013047) (B=F013225) (C=F010689) (D=F012905)	SHIM 15X30X1	2	2	2	2	2	2	2	Z
2	1	1E1060-25420	PAWL,CLUTCH	4	4	4	4	4	4	4	
3	1	1E1060-31100	SPRING 12.7X23,LOCK	2	2	2	2	2	2	2	
4	1	1E1060-31450	SHAFT HOLDER	4	4	4	4	4	4	4	
5	1	1E1061-31500	WHEEL F	2	2	2	2	2	2	2	
6	1	1E1061-31510	WHEEL R	2	2	2	2	2	2	2	
6-1	1	1E1061-31511 (A=F013047) (B=F013225) (C=F013689) (D=F012905)	WHEEL R	2	2	2	2	2	2	2	N
7	1	1E1061-31530	CAP,WHEEL	4	4	4	4	4	4	4	
8	1	1E1061-31550	TIRE	4	4	4	4	4	4	4	
9	1	1E1061-31650	CLUTCH	2	2	2	2	2	2	2	
10	1	1E1061-31660	HOUSING,CLUTCH	2	2	2	2	2	2	2	
11	1	1E1061-31670	SPRING 26,RING	2	2	2	2	2	2	2	
11-1	1	1E1061-31671 (A=FXXXXXX) (B=FXXXXXX) (C=FXXXXXX) (D=FXXXXXX) (E=FXXXXXX) (F=FXXXXXX)	SPRING 26,RING	2	2	2	2	2	2	2	N
12	1	1E1061-31680	COVER,CLUTCH	2	2	2	2	2	2	2	
12-1	1	1E1061-31681 (A=F012147) (B=F012125) (C=F010629) (D=F011785) (E=F013443) (F=F011079)	COVER,CLUTCH	2	2	2	2	2	2	2	N
13	1	1E1061-31750	PIN 5X25,STRAIGHT	2	2	2	2	2	2	2	
14	1	22157-080000	WASHER 8	2	2	2	2	2	2	2	
15	1	26018-080164	BOLT M 8X 16	2	2	2	2	2	2	2	
16	1	26107-080122	BOLT M 8X 12 PLATED		2	2		2	2		
16-1	1	26107-080162 (B=F010528) (C=F010266) (E=F016133) (F=F011472)	BOLT M 8X 16 PLATED	2	2	2	2	2	2	2	N
17	1	1E4070-46290	WASHER 9X30X3.2		4	4		4	4		1
18	1	1E1061-65010	SIDE GUARD 48L (N-E)		1	1					1
19	1	1E1071-65010	SIDE GUARD 53L (N-E)					1	1		1
20	1	1E1061-65030	SIDE GUARD (48R)		1	1					1
21	1	1E1071-65030	SIDE GUARD (53R)					1	1		1
22	1	1E1061-65070	BOSS,GUARD FIXING	4	4			4	4		1
23	1	1E1061-65080	GUARD METAL (N-E)	4	4			4	4		1
24	1	1E1061-65100	FRONT GURAD 48	1	1						1
25	1	1E1071-65100	FRONT GURAD 53					1	1		1
26	1	26016-080454	BOLT M 8X 45		4	4		4	4		1
27	1	26476-080162	BOLT M 8X 16, TAPPING		2	2		2	2		1
28	1	1E1061-31690 (A=F012147) (B=F012125) (C=F010629) (D=F011785) (E=F013443) (F=F011079)	PLATE,COVER KEEP	2	2	2	2	2	2	2	W
29	1	1E4110-24010 (A=F012147) (B=F012425) (C=F010629) (D=F011785) (E=F013543) (F=F011079)	LINER 15	2	2	2	2	2	2	2	W
30	1	1E1071-31570	WHEEL,FRONT	2	2	2	2	2	2	2	2
31	1	1E1071-31580	WHEEL,REAR	2	2	2	2	2	2	2	2
32	1	1E1071-31600	TIRE,PRO	4	4	4	4	4	4	4	2
33	1	1E1071-31700	COVER,CLUTCH EXTRNL.	2	2	2	2	2	2	2	2
34	1	24104-060024	BALL BEARING 6002UU	4	4	4	4	4	4	4	2

Fig.5. AXLE

5. AXLE



OCNP2-G14500 5. AXLE

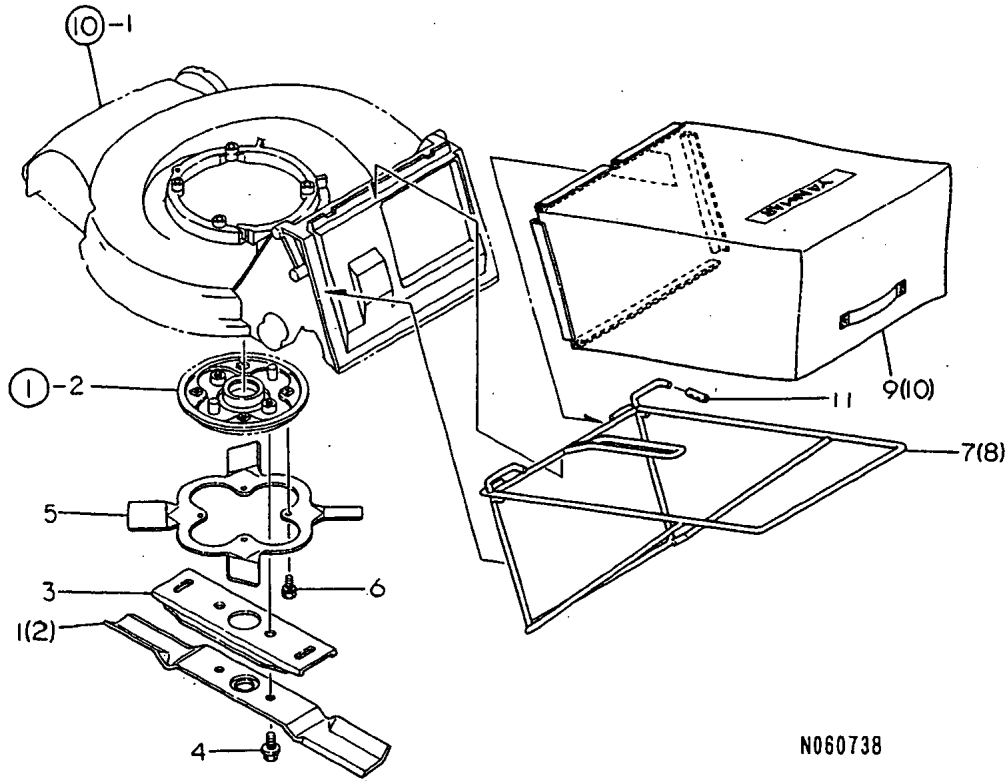
(A)=YL480T(R,-V)
 (B)=YL480TS(-N)
 (C)=YL480TSE(-N)

(D)=YL530T(R,-V)
 (E)=YL530TS
 (F)=YL530TSE

REF.	LEV.	PARTS NO.	DESCRIPTION	Q'TY						I	R
				(A)	(B)	(C)	(D)	(E)	(F)		
1	1	1E1061-35010	AXLE L,FRONT	1	1	1	1	1	1		
2	1	1E1061-35050	AXLE R,FRONT	1	1	1	1	1	1		
3	1	1E1061-35200	LEVER,FRONT WHEEL	2	2	2	2	2	2		
4	1	1E1061-35210	LEVER,REAR WHEEL	2	2	2	2	2	2		
5	1	1E1061-35250	GRIP,ADJUSTING	4	4	4	4	4	4		
6	1	1E1061-35350	BOLT 8X25,STEPPED	4	4	4	4	4	4		
7	1	1E1061-35510	AXLE L,REAR	1	1	1	1	1	1		
8	1	1E1061-35550	AXLE R,REAR	1	1	1	1	1	1		
9	1	22137-080000	WASHER 8, POLISHED	4	4	4	4	4	4		
10	1	26367-080002	U-NUT M 8	3	3	3	3	3	3		
11	1	26717-080002	NUT 8	1	1	1	1	1	1		

Fig.6. BLADE,FAN & CATCHER

6. BLADE, FAN & CATCHER



N060738

OCNP2-G14500 6. BLADE,FAN & CATCHER

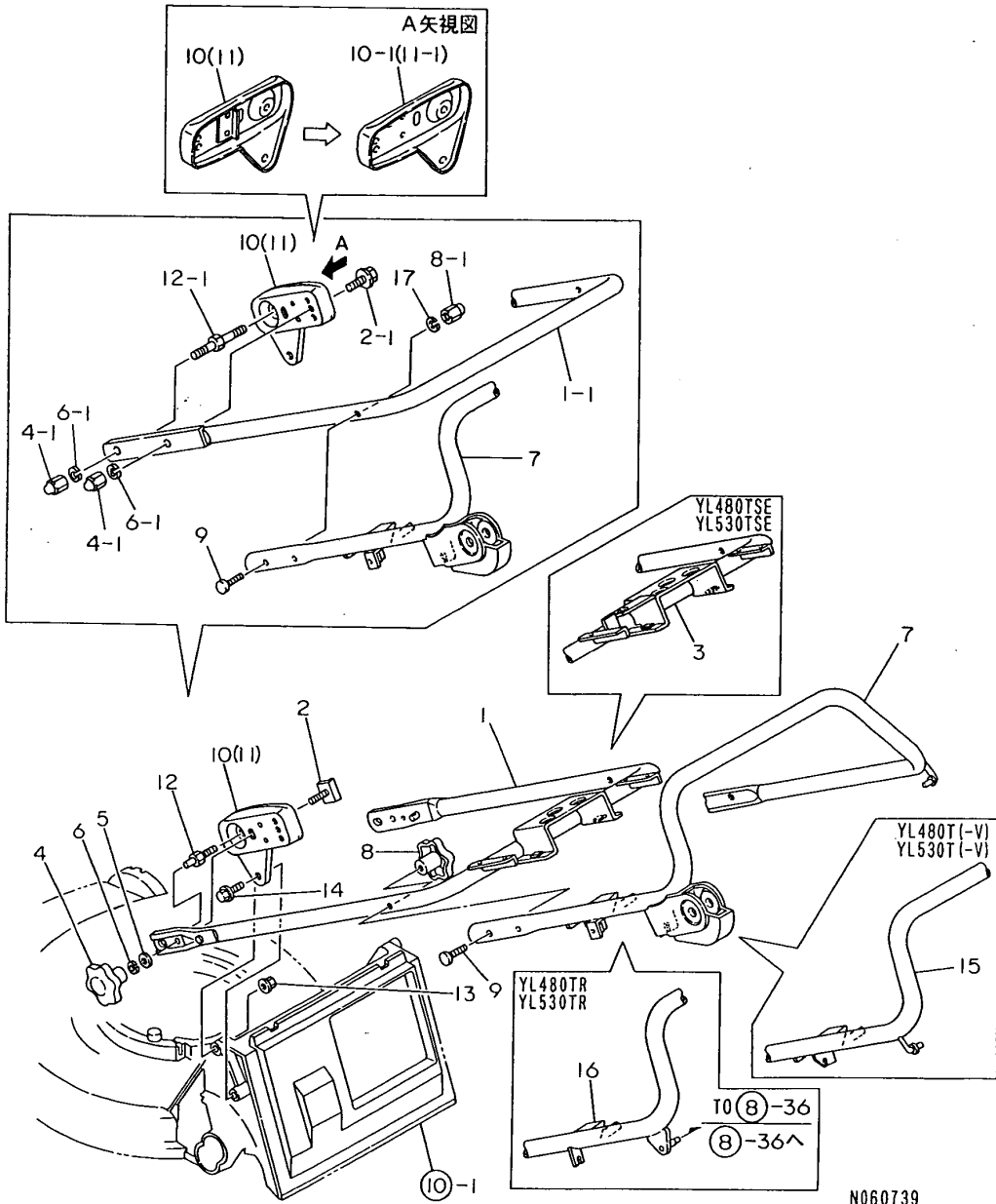
(A)=YL480T(R,-V)
(B)=YL480TS(-N)
(C)=YL480TSE(-N)

(D)=YL530T(R,-V)
(E)=YL530TS
(F)=YL530TSE

REF.	LEV.	PARTS NO.	DESCRIPTION	Q'TY						I	R
				(A)	(B)	(C)	(D)	(E)	(F)		
1	1	1E1061-41100	BLADE 48	1	1	1					
2	1	1E1071-41100	BLADE 53					1	1	1	
3	1	1E1060-41120	GUIDE,BLEDE	1	1	1	1	1	1	1	
4	1	26138-100202	BOLT 10X20,COLLAR HD	2	2	2	2	2	2	2	
5	1	1E1060-42050	FAN,BLADE	1	1	1	1	1	1	1	
6	1	26016-060122	BOLT M 6X 12	4	4	4	4	4	4	4	
7	1	1E1061-43010	FRAME 48,CATCHER	1	1	1					
7-1	1	1E1061-43011	FRAME 48,CATCHER	1	1	1					N
		(A=F010552) (B=F010645) (C=F010257)									
8	1	1E1071-43010	FRAME 53,CATCHER					1	1	1	
8-1	1	1E1071-43011	FRAME 53,CATCHER					1	1	1	N
		(D=F010785) (E=F011213) (F=F010554)									
9	1	1E1061-43100	CATCHER 48	1	1	1					
10	1	1E1071-43100	CATCHER 53					1	1	1	
11	1	1E1061-43200	PIPE 8 10 35	2	2	2	2	2	2	2	W
		(A=F010180) (B=F010140) (C=F010072) (D=F010198) (E=F010426) (F=F010198)									

Fig.7. HANDLE

7. HANDLE



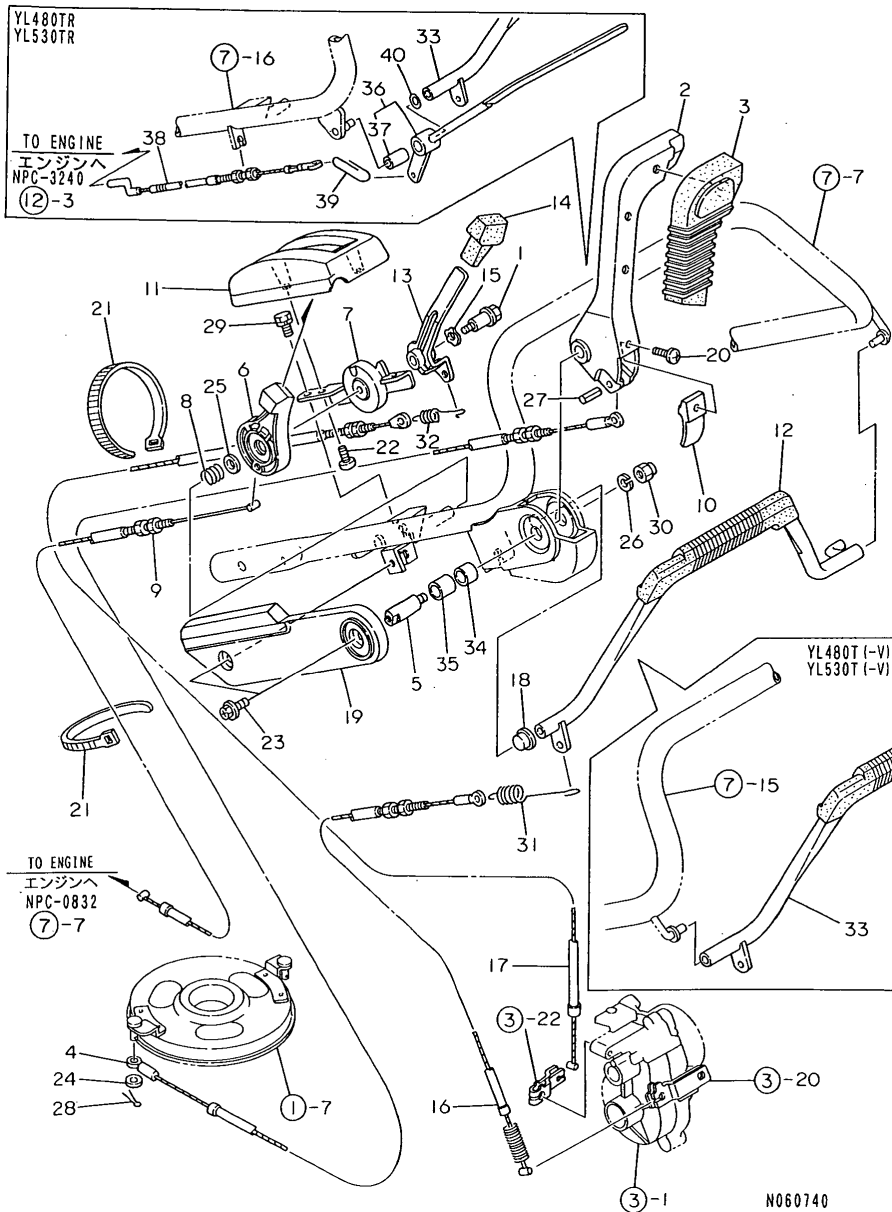
(A)=YL480T(R,-V)
(B)=YL480TS(-N)
(C)=YL480TSE(-N)

(D)=YL530T(R,-V)
(E)=YL530TS
(F)=YL530TSE

REF.	LEV.	PARTS NO.	DESCRIPTION	QTY						I	R
				(A)	(B)	(C)	(D)	(E)	(F)		
1	1	1E1061-50010	HANDLE COMP.,MAIN	1	1		1	1			
I 1-1	1	1E1071-50010 (B=F015274)	HANDLE COMP.,MAIN		1			1			S
				(E=F017010)							
2	1	1E1061-50100	BOLT 8X30,HANDLE	2	2		2	2	2		
I 2-1	1	26107-080302 (B=F015274)	BOLT M 8X 30 PLATED		2			2			S
				(E=F017010)							
3	1	1E1061-50510	HANDLE COMP.,MAIN				1				1
4	1	1E1060-51101	THUMBSCREW 8	2	2		2	2	2	2	
I 4-1	1	26668-080002 (B=F015274)	CAP NUT M 8		4				4		S
				(E=F017010)							
I 5	1	22137-080000 (B=F015274)	WASHER 8, POLISHED		2			2			Z
				(E=F017010)							
6	1	22217-080000	SPRING WASHER 8	2	2		2	2	2	2	
I 6-1	1	22217-080000 (B=F015274)	SPRING WASHER 8		4				4		K
				(E=F017010)							
7	1	1E1061-51010	HANDLE TS COMPL.		1	1		1	1		
7-1	1	1E1061-51011 (B=FXXXXXX) (C=FXXXXXX)	HANDLE TS COMPL.		1	1		1	1	1	N
				(E=FXXXXXX)		(F=FXXXXXX)					
8	1	1E1060-51101	THUMBSCREW 8	2	2		2	2	2	2	
I 8-1	1	26668-080002 (B=F015274)	CAP NUT M 8		2				2		S
				(E=F017010)							
9	1	1E1061-51110	BOLT 8X40,FLAT HEAD	2	2		2	2	2	2	
10	1	1E1061-56010	STAY (L), HANDLE	1	1		1	1	1	1	
I 10-1	1	1E1061-56020 (B=F015274)	STAY(LZ), HANDLE		1				1		Q
				(E=F017010)							
11	1	1E1061-56050	STAY (R), HANDLE	1	1		1	1	1	1	
I 11-1	1	1E1061-56060 (B=F015274)	STAY(RZ), HANDLE		1				1		Q
				(E=F017010)							
12	1	1E1061-56100	BOLT 8X36,STAY MTG.	2	2		2	2	2	2	
I 12-1	1	1E1071-56200 (B=F015274)	BOLT M8X36,STAY		2				2		S
				(E=F017010)							
13	1	26367-080002	U-NUT M 8	2	2		2	2	2	2	
14	1	26476-080162	BOLT M 8X 16,TAPPING	2	2		2	2	2	2	
15	1	1E1061-51700	HANDLE TD COMPL.	1				1			
16	1	1E1061-51710	HANDLE COMP.,TR	1				1			
I 17	1	22217-080000 (B=F015274)	SPRING WASHER 8		2				2		W
				(E=F017010)							

Fig.8. LEVER & WIRE

8. LEVER & WIRE



(A)=YL480T(R,-V)
(B)=YL480TS(-N)
(C)=YL480TSE(-N)

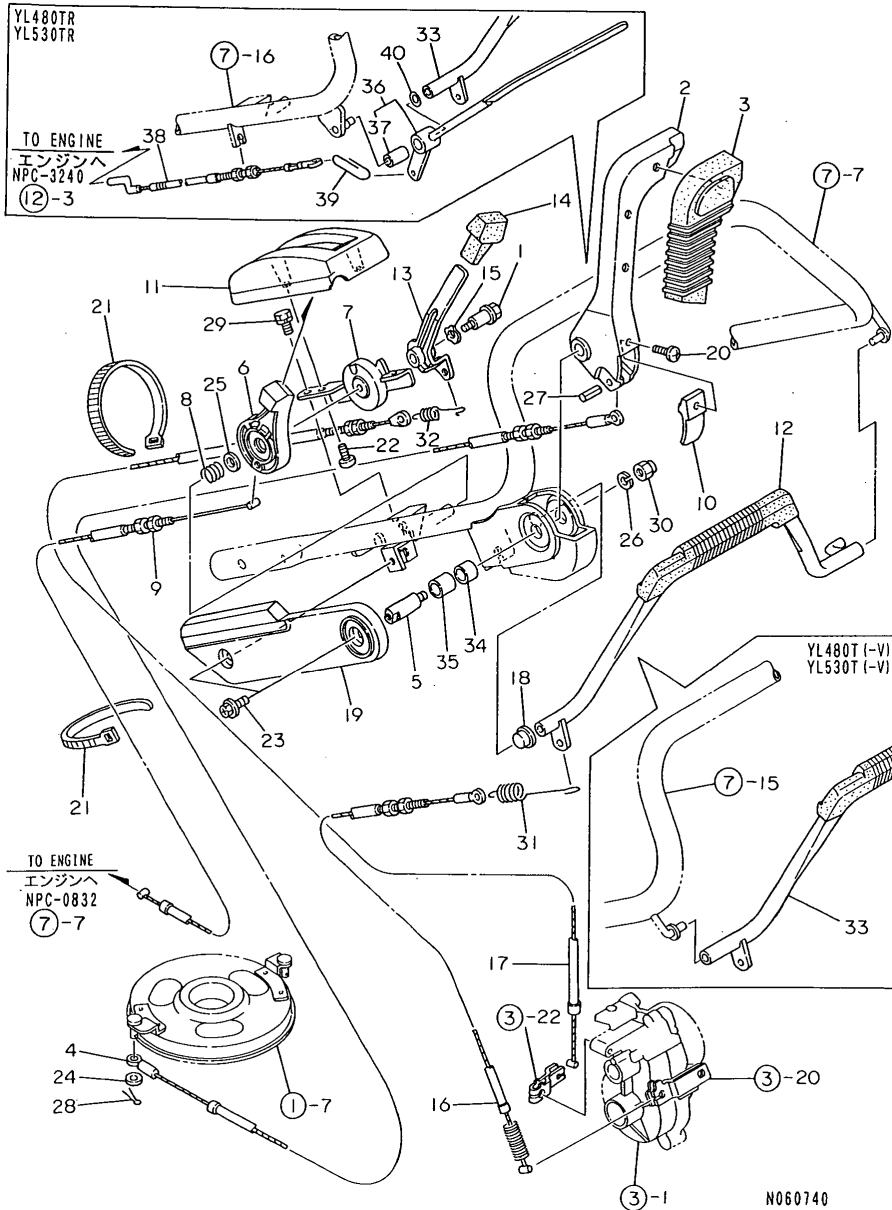
(D)=YL530T(R,-V)
(E)=YL530TS
(F)=YL530TSE

REF.	LEV.	PARTS NO.	DESCRIPTION	QTY						I	R
				(A)	(B)	(C)	(D)	(E)	(F)		
1	1	1E1060-12350	BOLT 6X12, STEPPED	1	1	1	1	1	1		
2	1	1E1061-57010	LEVER, BLADE CLUTCH		1	1		1	1		
2-1	1	1E1061-57011	LEVER, BLADE CLUTCH		1	1		1	1	N	
		(B=FXXXXXX) (C=FXXXXXX)		(E=FXXXXXX)				(F=FXXXXXX)			
3	1	1E1061-57040	GRIP, BLADE CLUTCH		1	1		1	1		
4	1	1E1061-57050	WIRE, BLADE CLUTCH		1	1		1	1		
I 4-1	1	1E1061-57051	WIRE, BLADE CLUTCH		1			1		N	
		(B=F015274)		(E=F017010)							
5	1	1E1061-57060	PIN, LEVER FULCRUM		1	1		1	1		
5-1	1	1E1061-57061	PIN, LEVER FULCRUM		1	1		1	1	N	
		(B=FXXXXXX) (C=FXXXXXX)		(E=FXXXXXX)				(F=FXXXXXX)			
6	1	1E1061-57110	LEVER ASSY, ACCEL.	1	1	1	1	1	1		
6-1	1	1E1061-57120	LEVER L, ACCELERATOR		1			1		N	1
		(B=F011705)		(E=F012998)							
6-2	1	1E1061-57111	LEVER, THROTTLE	1	1	1	1	1	1	N	
		(A=FXXXXXX) (B=FXXXXXX) (C=FXXXXXX) (D=FXXXXXX)		(E=FXXXXXX)				(F=FXXXXXX)			
6-3	1	1E1061-57121	LEVER L, ACCELERATOR		1	1		1	1	N	1
		(B=FXXXXXX) (C=FXXXXXX)		(E=FXXXXXX)				(F=FXXXXXX)			
7	1	1E1061-57130	COVER, ACCELERATOR	1	1	1	1	1	1		
8	1	1E1061-57140	SPRING 13, COILED	1	1	1	1	1	1		
8-1	1	1E1061-57141	COIL SPRING 13	1	1	1	1	1	1	N	
		(A=F010552) (B=F010645) (C=F010257) (D=F010785)		(E=F011213)				(F=F010554)			
I 9	1	1E1061-57150	WIRE, ACCELERATOR		1	1	1	1	1		
9-1	1	1E1061-57151	WIRE, ACCELERATOR		1			1		N	
		(B=F015274)		(E=F017010)							
I 10	1	1E1060-57200	PLATE, LEVER CONTACT		1	1		1	1		
11	1	1E1061-57300	COVER, LATCH	1	1	1	1	1	1		
12	1	1E1061-57500	LEVER CMP, TRV. CLUTCH		1	1		1	1		
12-1	1	1E1061-57501	T. CLUTCH LEVER CMP.	1	1	1	1	1	1	N	
		(B=F010645) (C=F010257)		(E=F011213)				(F=F010554)			
13	1	1E1061-57560	LEVER, CHANGE	1	1	1	1	1	1		
14	1	1E1061-57600	GRIP, CHANGE LEVER	1	1	1	1	1	1		
15	1	1E1061-57640	WASHER 10, PLAIN	1	1	1	1	1	1		
16	1	1E1061-57650	WIRE, TRAVEL CLUTCH	1	1	1	1	1	1		
I 16-1	1	1E1061-57651	WIRE, TRAVEL CLUTCH		1			1		N	
		(B=F015274)		(E=F017010)							
17	1	1E1061-57700	WIRE, CHANGE	1	1	1	1	1	1		
I 17-1	1	1E1061-57701	WIRE, CHANGE		1			1		N	
		(B=F015274)		(E=F017010)							
18	1	1E1061-57750	METAL, TRV. CLTCH. LVR.		1	1		1	1		
19	1	1E1061-57850	COVER, HANDLE SIDE		1	1		1	1		
I 20	1	1G0010-82850	SCREW 4X12, TAPPING		1	1		1	1		
21	1	1E6102-84970	BAND 140, WIRE LOCK	2	2	2	2	2	2		
22	1	1E6790-95471	SCREW 6X16, TAPPING	2	2	2	2	2	2		
23	1	1E4320-99120	BOLT 6X16, CRHM.	2	2			2	2		
24	1	22137-060000	WASHER 6, POLISHED		1	1		1	1		
25	1	22137-100000	WASHER 10, POLISHED	1	1	1	1	1	1		
26	1	22217-080000	SPRING WASHER 8		1	1		1	1		
27	1	22351-050025	SPRING PIN 5X25		1	1		1	1		
28	1	22417-200120	COTTER PIN 2.0X12		1	1		1	1		
29	1	26016-060124	BOLT 6X12 W/L.W.	1	1	1	1	1	1		

Remarks
(1) EXCLUSIVE FOR FINNISH.

Fig.8. LEVER & WIRE

8. LEVER & WIRE



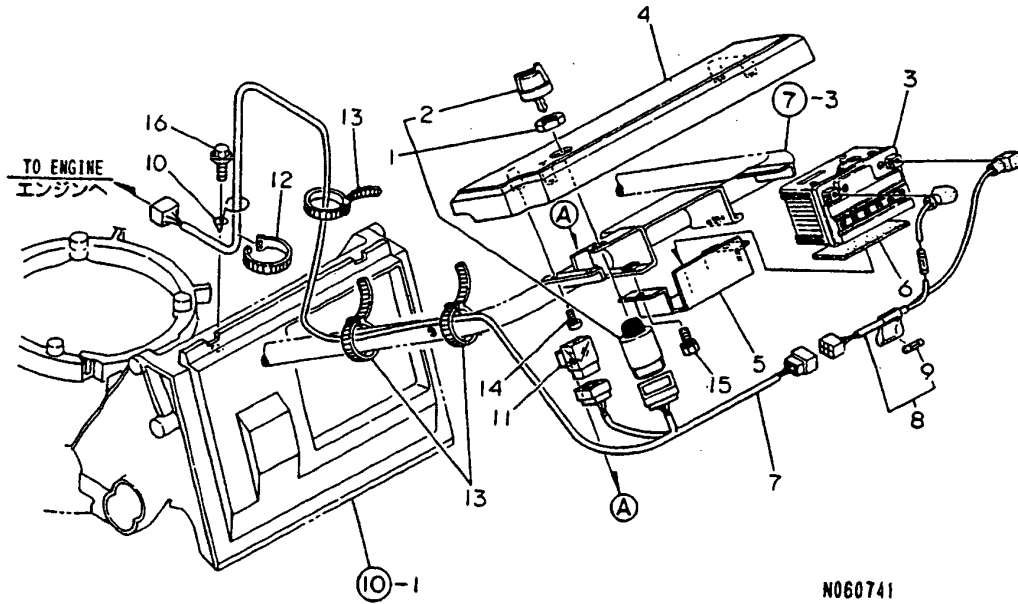
(A)=YL480T(R,-V) (D)=YL530T(R,-V)
 (B)=YL480TS(-N) (E)=YL530TS
 (C)=YL480TSE(-N) (F)=YL530TSE

REF.	LEV.	PARTS NO.	DESCRIPTION	Q'TY						I	R
				(A)	(B)	(C)	(D)	(E)	(F)		
30	1	26658-080002	CAP NUT M 8		1	1		1	1		
31	1	1E1061-57730	SPRING 112,TENSION	1	1	1	1	1	1		
32	1	1E1061-57740	SPRING 66,VENSION	1	1	1	1	1	1		
33	1	1E1061-57920	LEVER D CMP,TR.CLTCH	1				1			
33-1	1	1E1061-57921	T.CLUTCH LEVER CMP.	1			1				N
		(A=F010552)					(D=F010785)				
34	1	24550-012120	DRY BUSH 12X12		1	1		1	1		W
		(B=FXXXXXX) (C=FXXXXXX)			(E=FXXXXXX)			(F=FXXXXXX)			
34-1	1	1E1061-57080	METAL 12X12		1	1		1	1		S
		(B=FXXXXXX) (C=FXXXXXX)			(E=FXXXXXX)			(F=FXXXXXX)			
35	1	24550-012150	BUSH 12X15		1	1		1	1		W
		(B=FXXXXXX) (C=FXXXXXX)			(E=FXXXXXX)			(F=FXXXXXX)			
35-1	1	1E1061-57090	METAL 12X15		1	1		1	1		S
		(B=FXXXXXX) (C=FXXXXXX)			(E=FXXXXXX)			(F=FXXXXXX)			
36	1	1E1061-57200	LEVER COMP.,ENG.STOP	1			1				
37	2	24550-010200	BUSH 10X20	1			1				
38	1	1E1061-57270	WIRE,ENGINE STOP	1			1				
39	1	1E1061-57280	CLIP	1			1				
40	1	22137-080000	WASHER 8, POLISHED	1			1				

Remarks
 (1)EXCLUSIVE FOR FINNISH.

Fig.9. ELECTRICAL PARTS

9. ELECTRICAL PARTS



OCNP2-G14500 9. ELECTRICAL PARTS

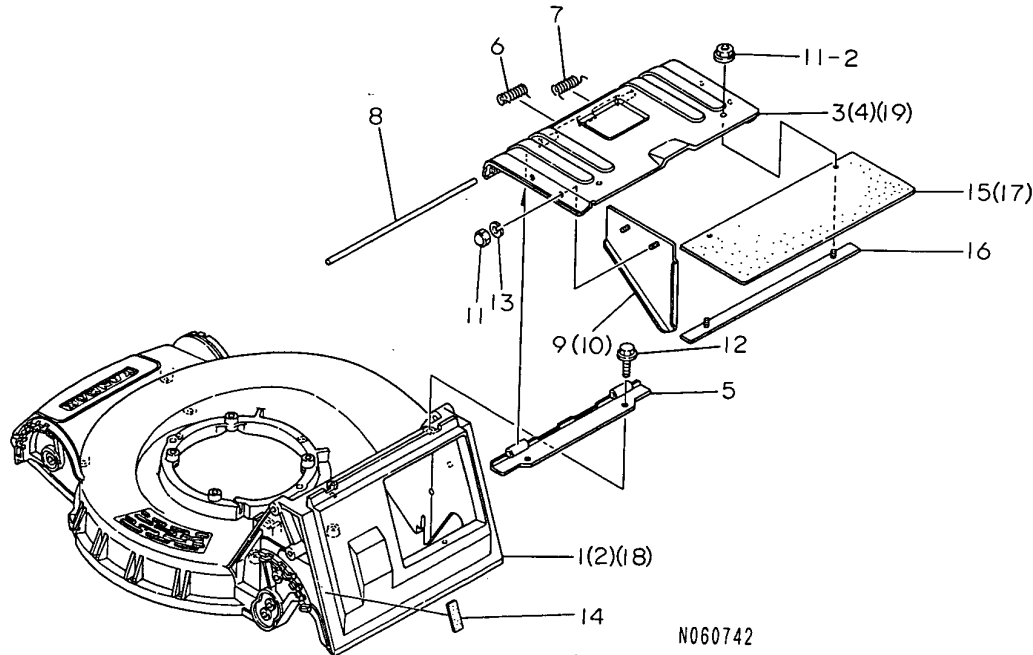
(A)=YL480T(R,-V)
 (B)=YL480TS(-N)
 (C)=YL480TSE(-N)

(D)=YL530T(R,-V)
 (E)=YL530TS
 (F)=YL530TSE

REF.	LEV.	PARTS NO.	DESCRIPTION	Q'TY						I	R
				(A)	(B)	(C)	(D)	(E)	(F)		
1	1	1E1061-58250	KEY,SWITCH			1					1
2	2	1E1061-58260	KEY,REVERSE			1					1
3	1	1E1060-58050	BATTERY YT4L-12			1					1
4	1	1E1061-58050	COVER,HANDLE TOP			1					1
5	1	1E1061-58070	HOLDER, BATTERY			1					1
6	1	1E1061-58100	RUBBER B,SHOCK ABSRB			1					1
7	1	1E1061-58150	HARNESS,MAIN			1					1
8	1	1E1061-58160	HARNESS,BATTERY			1					1
9	2	1E6451-82940	FUSE 30A			2					2
10	1	1E1061-58200	PIPE,HARNESS GUIDE			1					1
11	1	1E6910-82500	RELAY CA-1A			1					1
12	1	1E6460-83400	BAND 100			1					1
13	1	1E6102-84970	BAND 140,WIRE LOCK			3					3
14	1	1E6790-95471	SCREW 6X16,TAPPING			4					4
15	1	26016-060124	BOLT 6X12 W/L.W.			2					2
16	1	26476-080162	BOLT M 8X 16,TAPPING			1					1

Fig.10. CASING & COVER

10. CASING & COVER



(A)=YL480T(R,-V)
(B)=YL480TS(-N)
(C)=YL480TSE(-N)

(D)=YL530T(R,-V)
(E)=YL530TS
(F)=YL530TSE

REF.	LEV.	PARTS NO.	DESCRIPTION	QTY						I	R
				(A)	(B)	(C)	(D)	(E)	(F)		
1	1	1E1061-61010	CASING 48, BLADE	1	1	1					
2	1	1E1071-61010	CASING 53, BLADE					1	1	1	
3	1	1E1061-61050	COVER 48, CATCHER	1	1	1					
4	1	1E1071-61050	COVER 53, CATCHER					1	1	1	
5	1	1E1061-61070	SEAT, COVER MOUNTING	1	1	1	1	1	1	1	
6	1	1E1061-61110	SPRING A, COVER RETRN	1	1	1	1	1	1	1	
7	1	1E1061-61120	SPRING B, COVER RETRN	1	1	1	1	1	1	1	
8	1	1E1061-61130	PIN 8X310	1	1	1	1	1	1	1	
9	1	1E1061-61200	STAY L, CATCHER COVER	1	1	1	1	1	1	1	
9-1	1	1E1061-61201	CATCHER COVER STAY L	1	1	1	1	1	1	1	N
		(A=F010552) (B=F010645) (C=F010257) (D=F010785)						(E=F011213)		(F=F010554)	
I	9-2	1E1061-61201	CATCHER COVER STAY L		1				1		Z
		(B=F015274)						(E=F017010)			
10	1	1E1061-61250	STAY R, CATCHER COVER	1	1	1	1	1	1	1	
10-1	1	1E1061-61251	CATCHER COVER STAY R	1	1	1	1	1	1	1	N
		(A=F010552) (B=F010645) (C=F010257) (D=F010785)						(E=F011213)		(F=F010554)	
I	10-2	1E1061-61251	CATCHER COVER STAY R		1				1		Z
		(B=F015274)						(E=F017010)			
11	1	26658-060002	CAP NUT 6	4	4	4	4	4	4	4	
11-1	1	26367-060002	NUT M 6	4	4	4	4	4	4	4	N
		(A=F010552) (B=F010645) (C=F010257) (D=F010785)						(E=F011213)		(F=F010554)	
11-2	1	26367-060002	NUT M 6	6	6	6	6	6	6	6	K
		(A=F010552) (B=FXXXXXX) (C=F010257) (D=F010785)						(E=F011213)		(F=F010554)	
I	11-3	26367-060002	NUT M 6		6				6		Z
		(B=F015274)						(E=F017010)			
12	1	26476-080162	BOLT M 8X 16, TAPPING	2	2	2	2	2	2	2	
13	1	22217-060000	SPRING WASHER 6	4	4	4	4	4	4	4	Z
		(A=F010552) (B=F010645) (C=F010257) (D=F010785)						(E=F011213)		(F=F010554)	
14	1	1E1061-61300	PROTECTION RUBBER A	2	2	2	2	2	2	2	W
		(A=FXXXXXX) (B=FXXXXXX) (C=FXXXXXX) (D=FXXXXXX)						(E=FXXXXXX)		(F=FXXXXXX)	
I	14-1	1E1061-61300	PROTECTION RUBBER A		2				2		Z
		(B=F015274)						(E=F017010)			
15	1	1E1061-61310	RUBBER, SCTTR. PREVNT.	1	1	1					W
		(A=F010552) (B=F010645) (C=F010257)									
I	15-1	1E1061-61310	RUBBER, SCTTR. PREVNT.		1						Z
		(B=F015274)									
16	1	1E1061-61320	WASHER, RETAINER	1	1	1	1	1	1	1	W
		(A=F010552) (B=F010645) (C=F010257) (D=F010785)						(E=F011213)		(F=F010554)	
I	16-1	1E1061-61320	WASHER, RETAINER		1						Z
		(B=F015274)									
17	1	1E1071-61310	RUBBER 530, SCTTR. CHK					1	1	1	W
		(D=F010785)						(E=F011213)		(F=F010554)	
I	17-1	1E1071-61310	RUBBER 530, SCTTR. CHK						1		Z
		(E=F017010)									
18	1	7E1061-61010	CASING, BLD 48PL ASSY	1	1						1
19	1	7E1061-61050	COVER, CATCH 48PL ASSY	1	1						1

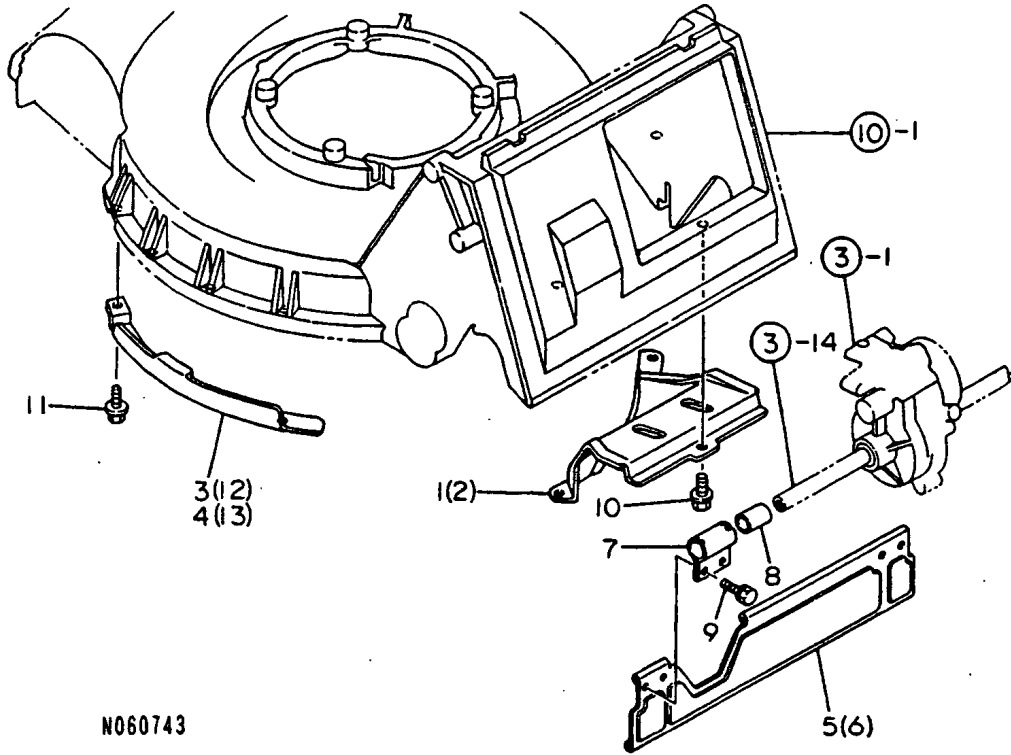
Remarks

(1) EXCLUSIVE FOR YL480TS-N, YL480TSE-N

N: Old $\begin{matrix} \leftarrow \text{Yes} \\ \text{No} \end{matrix}$ New, Q: Old $\begin{matrix} \leftarrow \text{No} \\ \text{Yes} \end{matrix}$ New, R: Old $\begin{matrix} \leftarrow \text{Yes} \\ \text{No} \end{matrix}$ New, S: Old $\begin{matrix} \leftarrow \text{No} \\ \text{Yes} \end{matrix}$ New, W: Add, Z: Discontinued, F: Interchangeable by set, K: Q'ty Change

Fig.11. SCRAPER & GUARD

11. SCRAPER & GUARD



N060743

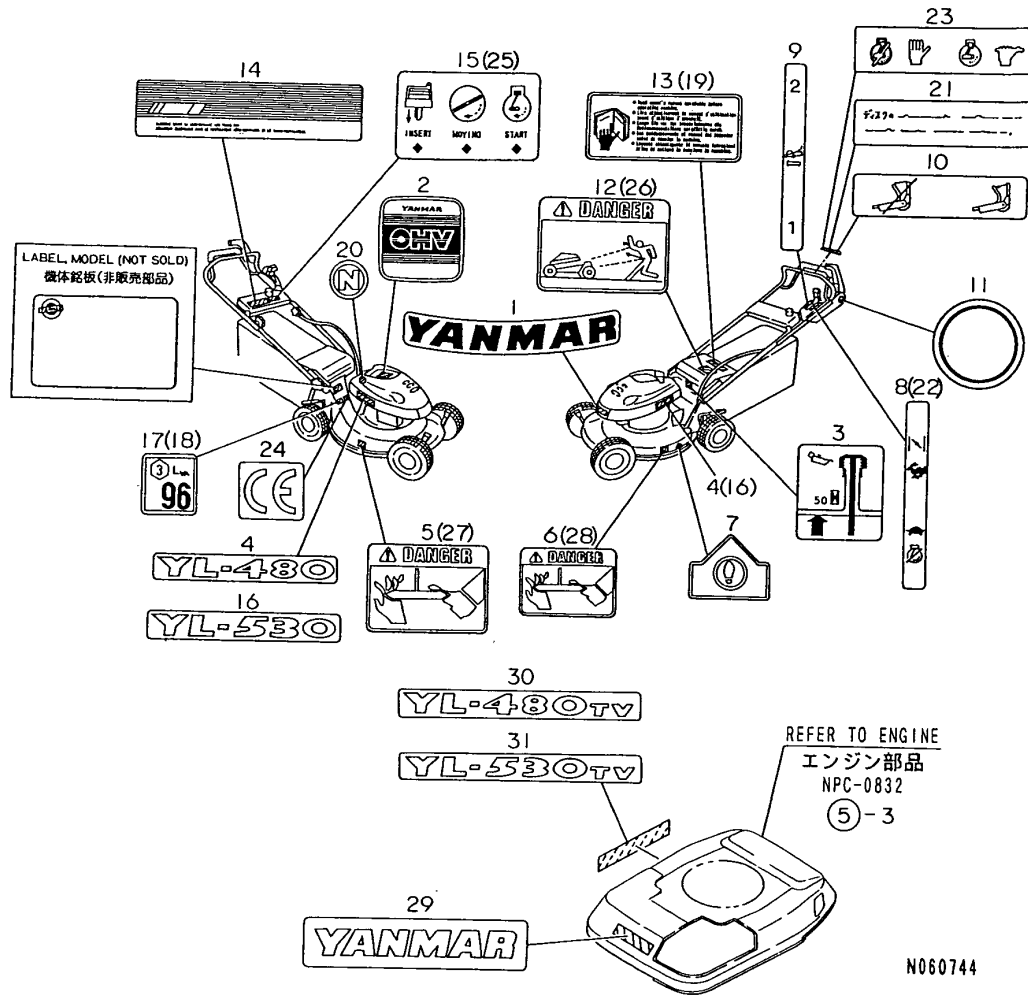
(A)=YL480T(R,-V)
(B)=YL480TS(-N)
(C)=YL480TSE(-N)

(D)=YL530T(R,-V)
(E)=YL530TS
(F)=YL530TSE

REF.	LEV.	PARTS NO.	DESCRIPTION	Q'TY						I	R
				(A)	(B)	(C)	(D)	(E)	(F)		
1	1	1E1061-63010	GUIDE 48, GLASS	1	1	1					
2	1	1E1071-63010	GUIDE 53, GLASS				1	1	1		
3	1	1E1061-63050	GUIDE 48L, GLASS FRNT	1	1	1					
3-1	1	1E1061-63051	GUIDE 48L, GLASS FRNT (A=FXXXXXX) (B=FXXXXXX) (C=FXXXXXX)	1	1	1					N
4	1	1E1071-63050	GUIDE 53L, GLASS FRNT					1	1	1	
4-1	1	1E1071-63051-1	GUIDE 53L, GLASS FRNT (D=FXXXXXX)					1	1	1	N
5	1	1E1061-63100	GUARD 48, STONE	1	1	1					
6	1	1E1071-63100	GUARD 53, STONE					1	1	1	
7	1	1E1061-63130	HANGER, STONE GUARD	2	2	2	2	2	2	2	
8	1	1E1061-63140	BUSH 16X18X25	2	2	2	2	2	2	2	
9	1	26016-060124	BOLT 6X12 W/L.W.	4	4	4	4	4	4	4	
10	1	26476-080162	BOLT M 8X 16, TAPPING	3	3	3	3	3	3	3	
11	1	26476-080162	BOLT M 8X 16, TAPPING	4	4	4	4	4	4	4	
12	1	1E1061-63060	GUIDE 48R, GLASS FRNT	1	1	1					
13	1	1E1071-63060-1	GUIDE 53R, GLASS FRNT					1	1	1	

Fig.12. LABELS

12. LABELS



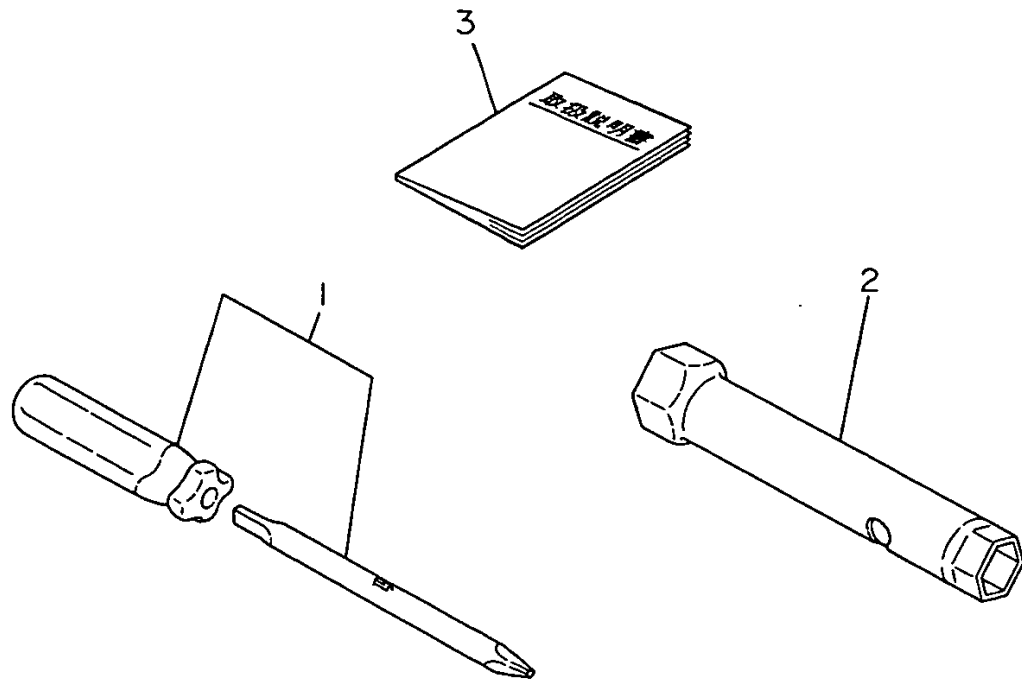
Remarks
 (1)EXCLUSIVE FOR YL480TS-N,YL480TSE-N
 (2)EXCLUSIVE FOR YL480T-R,YL530T-R.
 (3)EXCLUSIVE FOR YL480TSE-N.
 (4)EXCLUSIVE FOR YL480T-V,YL530T-V.
 * FOR SAFETY LABELS,
 REFER TO GROUP NO.14

(A)=YL480T(R,-V) (D)=YL530T(R,-V)
 (B)=YL480TS(-N) (E)=YL530TS
 (C)=YL480TSE(-N) (F)=YL530TSE

REF.	LEV.	PARTS NO.	DESCRIPTION	QTY						I	R
				(A)	(B)	(C)	(D)	(E)	(F)		
1	1	1E1061-86010	EMBLEM, FRONT	1	1	1	1	1	1		
2	1	1E1061-86030	MARK,RECOIL	1	1	1	1	1	1		
3	1	1E1061-86050	LABEL,OIL CAUTION	1	1	1	1	1	1		
4	1	1E1061-86060	MARK 480,MODEL	2	2	2					
5	1	1E1061-86100	LABEL A,HOUSING	1	1	1	1	1	1		
6	1	1E1061-86110	LABEL B,HOUSING	1	1	1	1	1	1		
7	1	1E1061-86120	LABEL,STEP	1	1	1	1	1	1		
7-1	1	1E1061-86121	LABEL,STEP	1	1	1	1	1	1		N
		(A=F010001) (B=F010001) (C=F010001) (D=F010001)		(E=F010151)	(F=F010031)						
8	1	1E1061-86150	LABEL,CONTROL	1	1	1	1	1	1		
9	1	1E1061-86160	INDICATING PLATE	1	1	1	1	1	1		
10	1	1E1061-86170	LABEL,BLADE LEVER		1	1		1	1		
10-1	1	1E1061-86171	LABEL,BLADE LEVER		1	1		1	1		R
		(B=F010210) (C=F010079)		(E=F010551)	(F=F010233)						
11	1	1E1061-86180	MARK,SIDE COVER		1	1		1	1		
12	1	1E1061-86200	LABEL,CATCHER COVER	1	1	1	1	1	1		
13	1	1E1061-86220	LABEL,HANDL'G CAUT'N	1	1	1	1	1	1		
14	1	1E1061-86550	MARK, TOP COVER			1			1		
15	1	1E1061-86560	LABEL,KEY SWITCH			1			1		
16	1	1E1071-86060	MARK 530,MODEL				2	2	2		
17	1	1E1060-86910	MARK 96,EC PASSING	1	1	1					
18	1	1E1070-86910	MARK 100,EC PASSING				1	1	1		
19	1	1E1061-86380	LABEL N,HANDL,G CAUT		1	1					Z 1
		(B=F010628) (C=F010286)									
20	1	1E1060-86750	MARK,CIRCLED "N"		1	1					1
21	1	1E1060-86970	LABEL N,BLADE LEVER		1	1					1
22	1	1E1061-86190	LABEL R,CONTROL	1			1				2
23	1	1E1061-86600	LABEL,ENGINE STOP	1			1				2
24	1	1E1061-86610	MARK "CE"	1	1	1	1	1	1	1	W
		(A=F100001) (B=F014735) (C=F010934) (D=F100001)		(E=F016133)	(F=F011472)						
25	1	1E1061-86570	LABEL,KEY SWITCH			1					3
26	1	1E1061-86200	LABEL,CATCHER COVER		1	1					Z 1
		(B=F010628) (C=F010286)									
27	1	1E1061-86100	LABEL A,HOUSING		1	1					Z 1
		(B=F010628) (C=F010286)									
28	1	1E1061-86110	LABEL B,HOUSING		1	1					Z 1
		(B=F010628) (C=F010286)									
29	1	1E1061-86020	MARK, FRONT	1			1				4
30	1	1E1061-86080	MARK"480TV" MODEL	1							4
31	1	1E1071-86080	MARK"530TV" MODEL				1				4

Fig.13. TOOLS

13. TOOLS



(A)=YL480T(R,-V)
(B)=YL480TS(-N)
(C)=YL480TSE(-N)

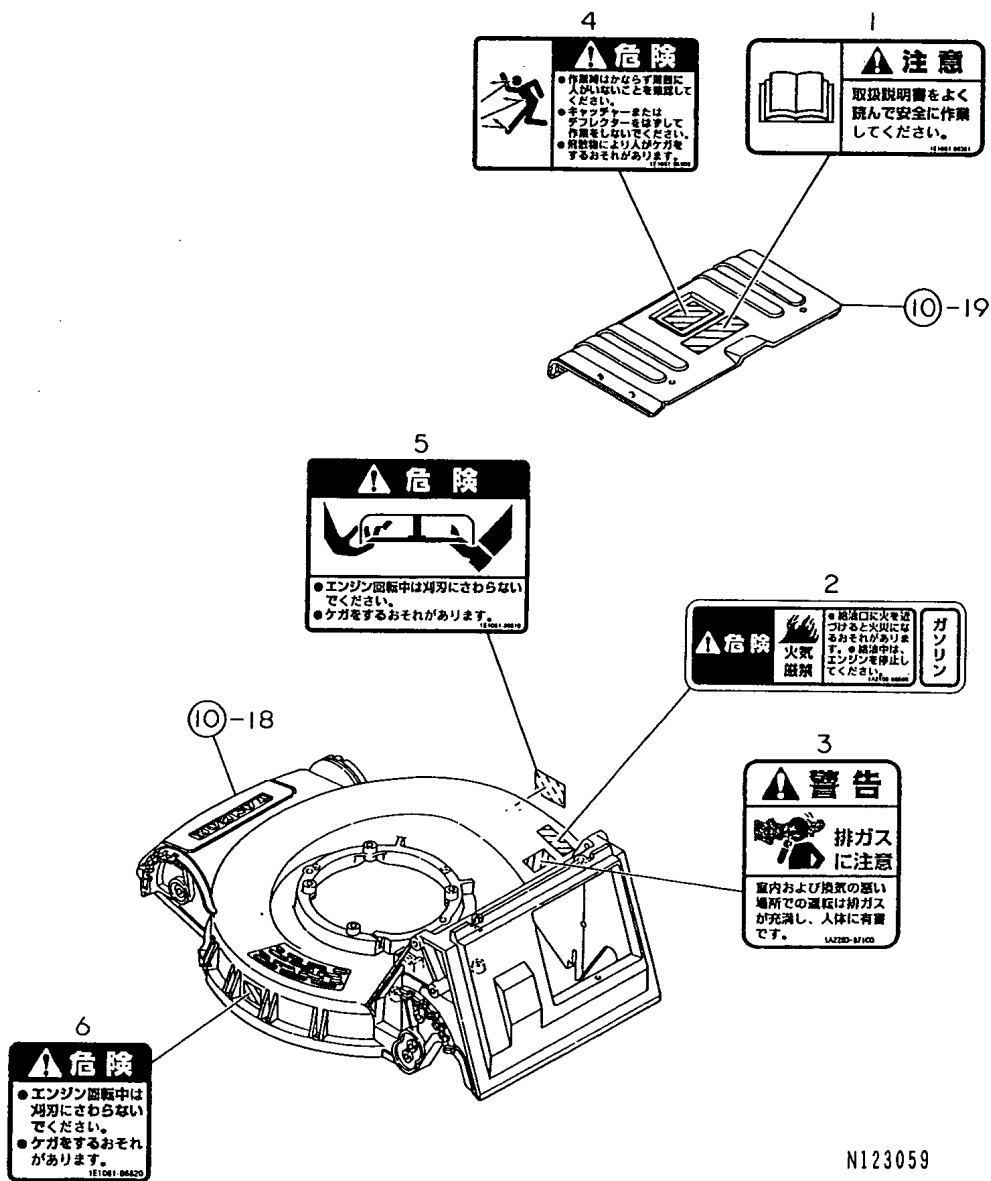
(D)=YL530T(R,-V)
(E)=YL530TS
(F)=YL530TSE

REF.	LEV.	PARTS NO.	DESCRIPTION	Q'TY						I	R
				(A)	(B)	(C)	(D)	(E)	(F)		
1	1	1C6052-88060	SCREWDRIVER,COMBINAT	1	1	1	1	1	1		
2	1	1E4150-99260	BOX WRENCH 13X21	1	1	1	1	1	1		
3	1	1E1061-88091	MANUAL,LWN.MOWER OP.			1	1				W 1
I	3-1	1E1061-88092	MANUAL,LWN.MOWER OP. (B=F010628) (C=F010286) (B=F015274)			1					S 1

Remarks
(1)EXCLUSIVE FOR YL480TS-N,YL480TSE-N

Fig.14. LABELS(SAFETY(ADD,ITEM)

14. LABELS(SAFETY(ADD, ITEM)



N123059

Remarks
(1)EXCLUSIVE FOR YL480TS-N,YL480TSE-N

OCNP2-G14500 14. LABELS(SAFETY(ADD,ITEM)

(A)=YL480T(R,-V) (D)=YL530T(R,-V)
(B)=YL480TS(-N) (E)=YL530TS
(C)=YL480TSE(-N) (F)=YL530TSE

REF.	LEV.	PARTS NO.	DESCRIPTION	Q'TY						I	R
				(A)	(B)	(C)	(D)	(E)	(F)		
1	1	1E1061-86381	CAUTION(OPERATE) (B=F010628) (C=F010286)	1	1					W	1
2	1	1A2100-86500	DANGER,FIRE PROHIBIT (B=F010628) (C=F010286)	1	1					W	1
3	1	1A2260-87100	WARNING,EXH.GAS (B=F010628) (C=F010286)	1	1					W	1
4	1	1E1061-86800	DANGER(SCATTER) (B=F010628) (C=F010286)	1	1					W	1
5	1	1E1061-86810	DANGER(CUT BLADE A) (B=F010628) (C=F010286)	1	1					W	1
6	1	1E1061-86820	DANGER(CUT BLADE B) (B=F010628) (C=F010286)	1	1					W	1